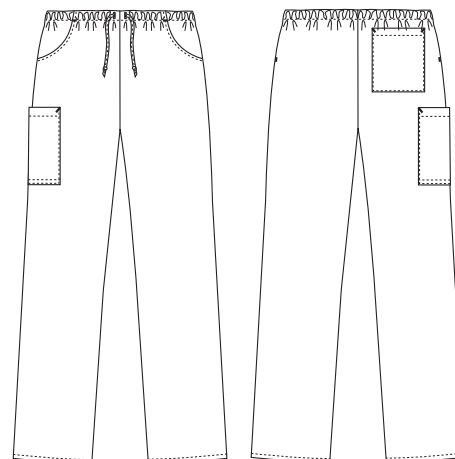


Heart

1051391 PULL-ON (Ordernumber: 1051391-0053)

These pull-on trousers have a great cut with relaxed and comfortable fit. The style has elastic waist and drawstring for individual adjustment and high flexibility. Two roomy front pockets, a practical back pocket and the large thigh pocket secure high functionality.



COLOURS:



FACTS:

- Classic silhouette and roomy fit
- Elastic waist with drawstring for individual adjustment
- Two roomy front pockets
- One practical back pocket
- One large thigh pocket
- Quality tested and proven very high breathability



QUALITY: 50/50% polyester/TENCEL™ - 195 g/m²
STOCK SIZES: XS - 4XL
CERTIFICERING & OUR ICONS:



FINISHED MEASURES BEFORE WASHING:

	Stamping size	2XS	XS	S	M	L	XL	2XL	3XL	4XL	5XL	6XL	Tolerance
A	1/2 Waist width	31,9	34	36,1	38,5	42	45,9	49,7	53,6	57,4	61,3	65,1	+/- 2,0 cm
B	1/2 Hip width	13	49	52	55,5	59	64	69	74	79	79	89	+/- 1,5 cm
E1*	Rise (Help measure for hip)	21	22	23	24	25	26,4	27,7	29,1	30,4	31,8	33,1	
C	Side length	100	101	102	103	104,5	106	107,5	109	111	112,5	114	+/- 2,0 cm
D	Inseam length	79	79	79	79	79	79	79	79	79	79	79	+/- 1,5 cm

Please note: Final measures will depend on tolerance in garment making (See above) and measuring method (+/- 0.5 cm)
 Also note: Washing and drying conditions in industrial laundering can further more give a shrinkage up to 3-5% (Depending of material)
 All models meet the requirements industrial laundry. Washing instructions on our homepage www.nybo.com

DOMESTIC LAUNDERING:



PURVEYOR TO H. M. THE QUEEN OF DENMARK

