

Charisma Premium

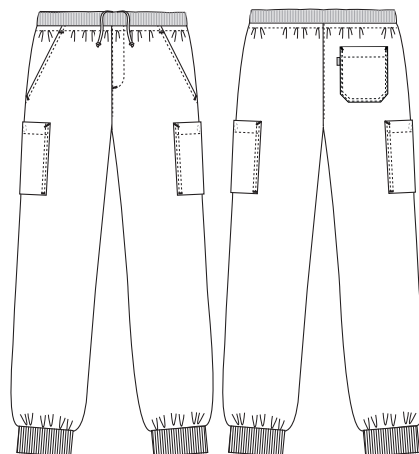
5050571 UNISEX PANTS (Ordernumber: 5050571-0000)

Smart pull-on trousers inspired by casual sweatpants; A perfect choice for men and women. This style can also be worn at early stage of pregnancy. Elastic waist with soft rib and hidden drawstring. Stylish slashed front pockets, one back pocket and two very large and closable thigh pockets with extra volume offer plenty of room for carrying needed devices and tools throughout a full workday. Rib at leg opening adds comfort and guarantees functional leg turn-up in fast and easy way. Trousers designed with attention to user movement and comfort. Developed with ease for user to bend and stretch, without trousers pulling at waist and back. This style is perfect choice for different seasons and for daily wear.

COLOURS:



0000-White



FACTS:

- Pull-on style with relaxed fit
- Adjustable waist with wide elastic, soft rib, and drawstring
- Moderate/high waist
- Roomy hip and thigh width suitable for unisex fit
- Deep front pockets with extra room and easy access
- One back pocket
- Two large thigh pockets with press button closure. Pocket size fits tablets and other devices
- Adjustable inseam length with comfortable rib for easy turn-up, to accommodate all seasons

QUALITY: 50/50% polyester/TENCEL™ - 225 g/m²

STOCK SIZES: XS - 4XL

CERTIFICERING & OUR ICONS:



STANDARD
100
2076-306
DTI

www.oeko-tex.com



STeP

www.oeko-tex.com



MADE IN
GREEN
CB3VTM7MX
DTI

www.oeko-tex.com



FINISHED MEASURES BEFORE WASHING:

	Stamping size	2XS	XS	S	M	L	XL	2XL	3XL	4XL	5XL	6XL	Tolerance
A	1/2 Waist width	31,2	33,3	35,4	37,8	41,3	45,2	49	52,9	56,7	60,6	68,3	+/- 1,5 cm
B	1/2 Hip width	44,6	47,5	50,5	54	57,5	62,5	67,5	72,5	77,5	82,5	92,5	+/- 1,5 cm
E1*	Rise (Help measure for hip)	14	14,5	15	15,5	16,1	16,7	17,3	17,9	18,5	19,1	20,3	
C	Side length	97	98	99	100	101,7	103,3	105	106,6	108,3	109,9	113,2	+/- 1,5 cm
D	Inseam length	78	78	78	78	78	78	78	78	78	78	78	+/- 1,5 cm

Please note: Final measures will depend on tolerance in garment making (See above) and measuring method (+/- 0.5 cm)
Also note: Washing and drying conditions in industrial laundering can further more give a shrinkage up to 3-5% (Depending of material)
All models meet the requirements industrial laundry. Washing instructions on our homepage www.nybo.com

DOMESTIC LAUNDERING:

