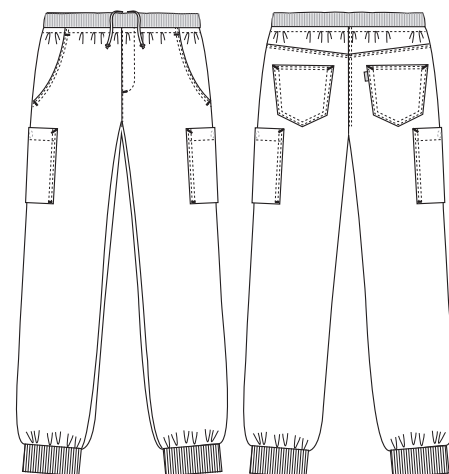


Super Cool

5050482 PULL-ON TROUSER, UNISEX
(Ordernumber: 5050482-0011)

Available also in lengths: short-10 cm, long+10 cm

Smart pull-on trousers inspired by street style; fit is relaxed at waist, hip, and thigh area. Legs and leg opening in narrow silhouette. A perfect choice for men and women. This style can also be worn at early stage of pregnancy. Elastic waist with soft rib and drawstring. Stylish slashed front pockets, jeans back pocket and two very large and closable thigh pockets with extra volume offer plenty of room for carrying needed devices and tools throughout a full workday. Rib at back leg opening adds comfort and guarantees functional leg turn-up in fast and easy way. Trousers designed with attention to user movement and comfort. Developed with ease for user to bend and stretch, without trousers pulling at waist and back. This style is perfect choice for different seasons and for daily wear both indoors and outdoors.



COLOURS:



0011-Navy

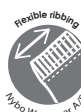
FACTS:

- Shortened back length to accommodate different heights
- Practical press button closure at front
- Roomy hip pockets with press button closure and straps for ID-cards and keys
- Mobile pocket inside one hip pocket
- Roomy chest pocket with press button closure, pen strap inside and visible strap to attach ID card, devices etc
- Adjustable inseam length with comfortable rib for easy turn-up, to accommodate all seasons

QUALITY: 63/34/3% pes/co/EOL stretch – 190 g/m²

STOCK SIZES: XS - 4XL (5XL - 6XL special order)

CERTIFICERING & OUR ICONS:



FINISHED MEASURES BEFORE WASHING:

	Stamping size	2XS	XS	S	M	L	XL	2XL	3XL	4XL	5XL	6XL	Tolerance
A	1/2 Waist width	31,2	33,3	35,4	37,8	41,3	45,2	49	52,9	56,7	60,6	68,3	+/- 1,5 cm
B	1/2 Hip width	44,6	47,5	50,5	54	57,5	62,5	67,5	72,5	77,5	82,5	92,5	+/- 1,5 cm
E1*	Rise (Help measure for hip)	14	14,5	15	15,5	16,1	16,7	17,3	17,9	18,5	19,1	20,3	
C	Side length	97	98	99	100	101,7	103,3	105	106,6	108,3	109,9	113,2	+/- 1,5 cm
C	Side length -10 (211)	87	88	89	90	91,7	93,3	95	96,6	98,3	99,9	103,2	+/- 1,5 cm
C	Side length +10 (202)	107	108	109	110	111,7	113,3	115	116,6	118,3	119,9	123,2	+/- 1,5 cm
D	Inseam length	78	78	78	78	78	78	78	78	78	78	78	+/- 1,5 cm
D	Inseam length -10 (211)	68	68	68	68	68	68	68	68	68	68	68	+/- 1,5 cm
D	Inseam length +10 (202)	88	88	88	88	88	88	88	88	88	88	88	+/- 1,5 cm

Please note: Final measures will depend on tolerance in garment making (See above) and measuring method (+/- 0.5 cm)

Also note: Washing and drying conditions in industrial laundering can further more give a shrinkage up to 3-5% (Depending of material)

All models meet the requirements industrial laundry. Washing instructions on our homepage www.nybo.com

DOMESTIC LAUNDERING:

