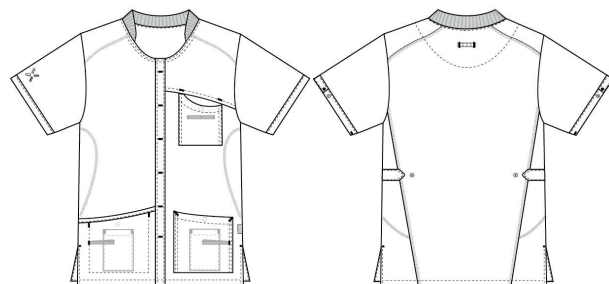


# Sporty

## 5360129 TRENDY UNISEX TUNIC (Ordernumber: 5360129-0064)

Shirt designed for both men and women. The shirt is designed with a breast pocket and both hip pockets have integrated pockets for mobile phones and key straps. All pockets are fitted with press buttons to secure pocket contents. The cut is straight and the shirt offers a pleasant length at the back. The shirt is designed with ribbing in the sides for extra flexibility. The sleeves and waist have elastic adjustment to allow extra shaping for a feminine expression if desired.



### COLOURS:



0010-Blue



0011-Navy



0013-Light blue



0040-Grey



0050-Green

0053-  
Light Green0054-  
Dark Green

0064-Bordeaux



### FACTS:

- Key straps inside the hip pockets
- Pencil strap inside the chest pocket
- Mobile and chest pocket which meet users' present needs
- All pockets are fitted with press buttons to secure pocket contents
- Stretchable back
- Adjustment straps in the unisex model for better freedom of movement
- Sporty lines and flatlock in contrast which gives a smart look
- Second quality in stretch for better comfort
- Tested and proven very high breathability



**QUALITY:** 50/50% polyester/BCI cotton - 140 g/m<sup>2</sup>  
**STOCK SIZES:** XS - 4XL (5XL - 6XL special order)  
**CERTIFICERING & OUR ICONS:**



STANDARD  
100  
2076-306  
DTI

www.oeko-tex.com

breathable  
Nybo Workwear A/Smobile pocket  
Nybo Workwear A/Skey strap  
Nybo Workwear A/Sadjustable back  
Nybo Workwear A/Sdiagonal stretch  
Nybo Workwear A/S

### FINISHED MEASURES BEFORE WASHING:

	40	44	48	52	56	60	64	68	72	76	80	
Stamping size	2XS	XS	S	M	L	XL	2XL	3XL	4XL	5XL	6XL	Tolerance
<b>A</b> 1/2 Chest width	48	52	56	60	64	69	74	79	84	89	94	+/- 1,5 cm
<b>B</b> 1/2 Bottom width	48	52	56	60	64	69	74	79	84	89	94	+/- 1,5 cm
<b>C</b> Back length	70	71	72	73	74	75	76	77	78	79	80	+/- 1,5 cm
<b>D</b> Sleeve length	26,5	26,5	26,5	26,5	26,5	26,5	26,5	26,5	26,5	26,5	26,5	+/- 1,0 cm

Please note: Final measures will depend on tolerance in garment making (See above) and measuring method (+/- 0.5 cm)  
Also note: Washing and drying conditions in industrial laundering can further more give a shrinkage up to 3-5% (Depending of material)  
All models meet the requirements industrial laundry. Washing instructions on our homepage [www.nybo.com](http://www.nybo.com)

### DOMESTIC LAUNDERING:



PURVEYOR TO H. M. THE QUEEN OF DENMARK

# NYBO

WORKWEAR SINCE 1962

These models have been developed by NYBO Workwear A/S – We reserve the rights of production of these models – Not to be copied.

