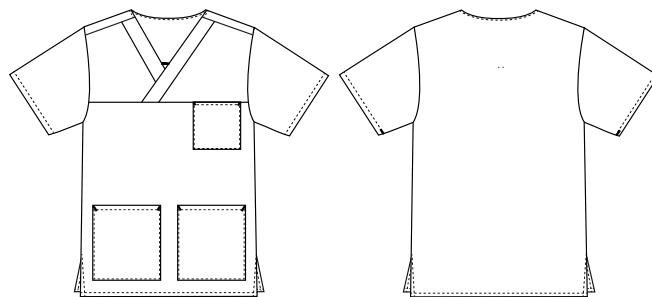


# Heart

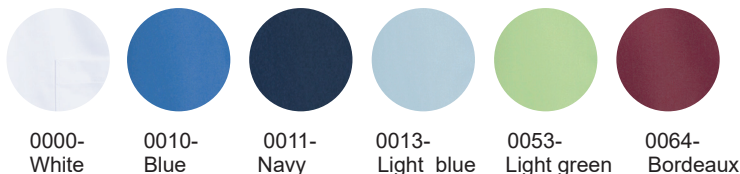
## 5470961 SMOCK

(Ordernumber: 5470961-0010)

Beautiful waisted tunic with a good length that covers the behind nicely. The sleeves cover the upper arms with a nice and modern appearance. The model has long slits in the sides for optimal freedom of movement. The decent sized V-neck makes the neck and face appear a little slimmer. The model has one chest pocket and two hip pockets with key straps. As an extra nice feature a handy pocket for the mobile phone is placed inside the right hip pocket. The tunic is made of the new pleasant temperature regulating fabric - TENCEL™.



### COLOURS:



### FACTS:

- Classic silhouette and roomy fit
- One big chest pocket
- Two spacious hip pockets
- One practical mobile pocket inside hip pocket
- Slits for better comfort
- Quality tested and proven very high breathability

**QUALITY:** 50/50% polyester/TENCEL™ Lyocell - 195 g/m²

**STOCK SIZES:** XS - 4XL

**CERTIFICERING & OUR ICONS:**



STANDARD  
100  
2076-306  
DTI

www.oeko-tex.com



www.oeko-tex.com

STeP



www.oeko-tex.com

MADE IN  
GREEN  
CB3VTM7MX  
DTI

**GREEN  
BUTTON**  
GOOD FOR PEOPLE.  
GOOD FOR NATURE.



TENCEL™ is a trademark of Lenzing AG .

### FINISHED MEASURES BEFORE WASHING:

	Stamping size	2XS	XS	S	M	L	XL	2XL	3XL	4XL	5XL	6XL	Tolerance
A	1/2 Chest width	47	51	55	59	63	68	73	78	83	88	93	+/- 1,5 cm
B	1/2 Bottom width	47	51	55	59	63	68	73	79	84,5	89,5	94,5	+/- 1,5 cm
C	Back length	71	72	72	74	75	76	77	78	79	80	81	+/- 1,5 cm
D	Sleeve length	27,2	27,8	27,8	29	29,6	30,3	31	31,7	32,4	33,1	33,8	+/- 1,0 cm

Please note: Final measures will depend on tolerance in garment making (See above) and measuring method (+/- 0.5 cm)

Also note: Washing and drying conditions in industrial laundering can further more give a shrinkage up to 3-5% (Depending of material)

All models meet the requirements industrial laundry. Washing instructions on our homepage [www.nybo.com](http://www.nybo.com)

### DOMESTIC LAUNDERING:



PURVEYOR TO H. M. THE QUEEN OF DENMARK

**NYBO**  
WORKWEAR SINCE 1962

