

Clima Sport

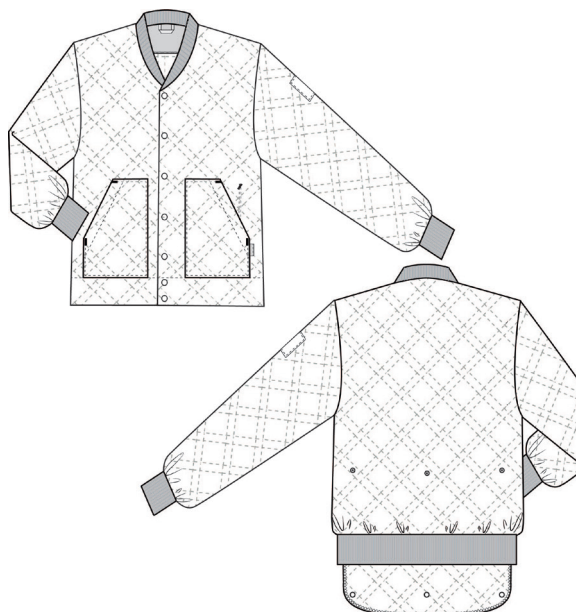
4010001 THERMAL JACKET (Article nr: 4010001-0011)

Functional quilted thermal jacket with ribbed collar and press button closure, long sleeves with ribbing. Two large front pockets, as well as an inner pocket on the left side. The back has a ribbed edge to fit close to the body and is adjustable via a back flap so that the body is also covered when working in kitchens or the like. Insulating, padded middle layer is in 100% recycled polyester.

COLOURS:



11-Navy



QUALITY: 65/35% polyester/cotton - 380 g/m²

STOCK SIZES: XS - 3XL

CERTIFICERING & OUR ICONS:



FINISHED MEASURES BEFORE WASHING:

| | | 40 | 44 | 48 | 52 | 56 | 60 | 64 | 68 | 72 | 76 | 80 | |
|---|------------------|------|------|------|------|------|------|------|------|------|------|------|------------|
| | Stamping size | 2XS | XS | S | M | L | XL | 2XL | 3XL | 4XL | 5XL | 6XL | Tolerance |
| A | 1/2 Chest width | 49,7 | 53,7 | 57,7 | 61,7 | 65,7 | 69,7 | 73,7 | 77,7 | 81,7 | 85,7 | 89,7 | +/- 1,5 cm |
| B | 1/2 Bottom width | 45,8 | 49,8 | 53,8 | 57,8 | 61,8 | 65,8 | 69,8 | 73,8 | 77,8 | 81,8 | 85,8 | +/- 1,5 cm |
| C | Back length | 63,5 | 64,5 | 65,5 | 66,5 | 67,5 | 68,5 | 69,5 | 70,5 | 71,5 | 72,5 | 73,5 | +/- 1,5 cm |
| D | Sleeve length | 59,4 | 60,9 | 62,4 | 63,9 | 65,3 | 66,8 | 68,3 | 69,8 | 71,3 | 72,7 | 74,2 | +/- 1,0 cm |

Please note: Final measures will depend on tolerance in garment making (See above) and measuring method (+/- 0.5 cm)

Also note: Washing and drying conditions in industrial laundering can further more give a shrinkage up to 3-5% (Depending of material)

All models meet the requirements industrial laundry. Washing instructions on our homepage www.nybo.com

DOMESTIC LAUNDERING:



PURVEYOR TO H. M. THE QUEEN OF DENMARK

NYBO
WORKWEAR SINCE 1962