

Wellness

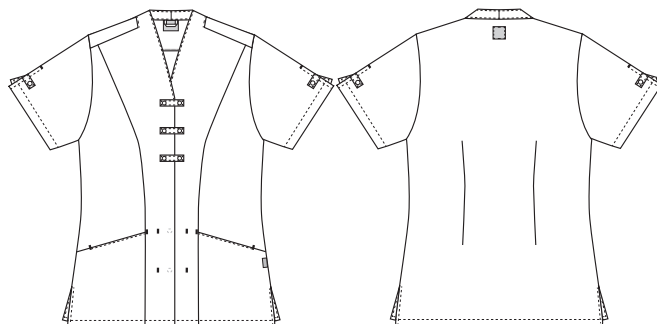
1361171 LADIES' TUNIC (Ordernumber: 1361171-0072)

Lightly waisted ladies' tunic with Asian-inspired closure at the front. Elegant collar highlights a beautiful and streamlined look. Short sleeves with slits and strap detail emphasize the light and comfortable feel. Two discreet but practical hip pockets with hidden key straps, make the elegant tunic extra functional for a thoroughly well-dressed staff. The top has a good length that covers the hips and back in all work situations. Slits in the side ensure additional flexibility and freedom of movement.

COLOURS:



72-Black



FACTS:

- Elegant push-button closure at the front
- Practical and discreet hip pockets
- Concealed key straps in hip pockets
- Side slits for additional freedom of movement
- Soft and light fabric quality with stretch



QUALITY: 65/35% polyester/cotton 170 g/m²
STOCK SIZES: XS - 4XL (5XL - 6XL special order)
CERTIFICERING & OUR ICONS:



FINISHED MEASURES BEFORE WASHING:

	Stamping size	XS/32-34	S/36-38	M/40-42	L/44-46	XL/48-50	2XL/52-54	3XL/56-58	4XL/60-62	5XL/64-66	Tolerance
A	1/2 Chest width	48	52	56	60	66	72	78	84	90	+/- 1,5 cm
B	1/2 Bottom width	52	55,5	58,5	61,5	66,5	71,5	76,5	81,5	86,5	+/- 1,5 cm
C	Back length	73	74	75	76	77	78	79	80	81	+/- 1,5 cm
D	Sleeve length	21	22	23	24	25	25,5	26,5	27,5	28,5	+/- 1,0 cm

Please note: Final measures will depend on tolerance in garment making (See above) and measuring method (+/- 0.5 cm)
 Also note: Washing and drying conditions in industrial laundering can further more give a shrinkage up to 3-5% (Depending of material)
 All models meet the requirements industrial laundry. Washing instructions on our homepage www.nybo.com

DOMESTIC LAUNDERING:

